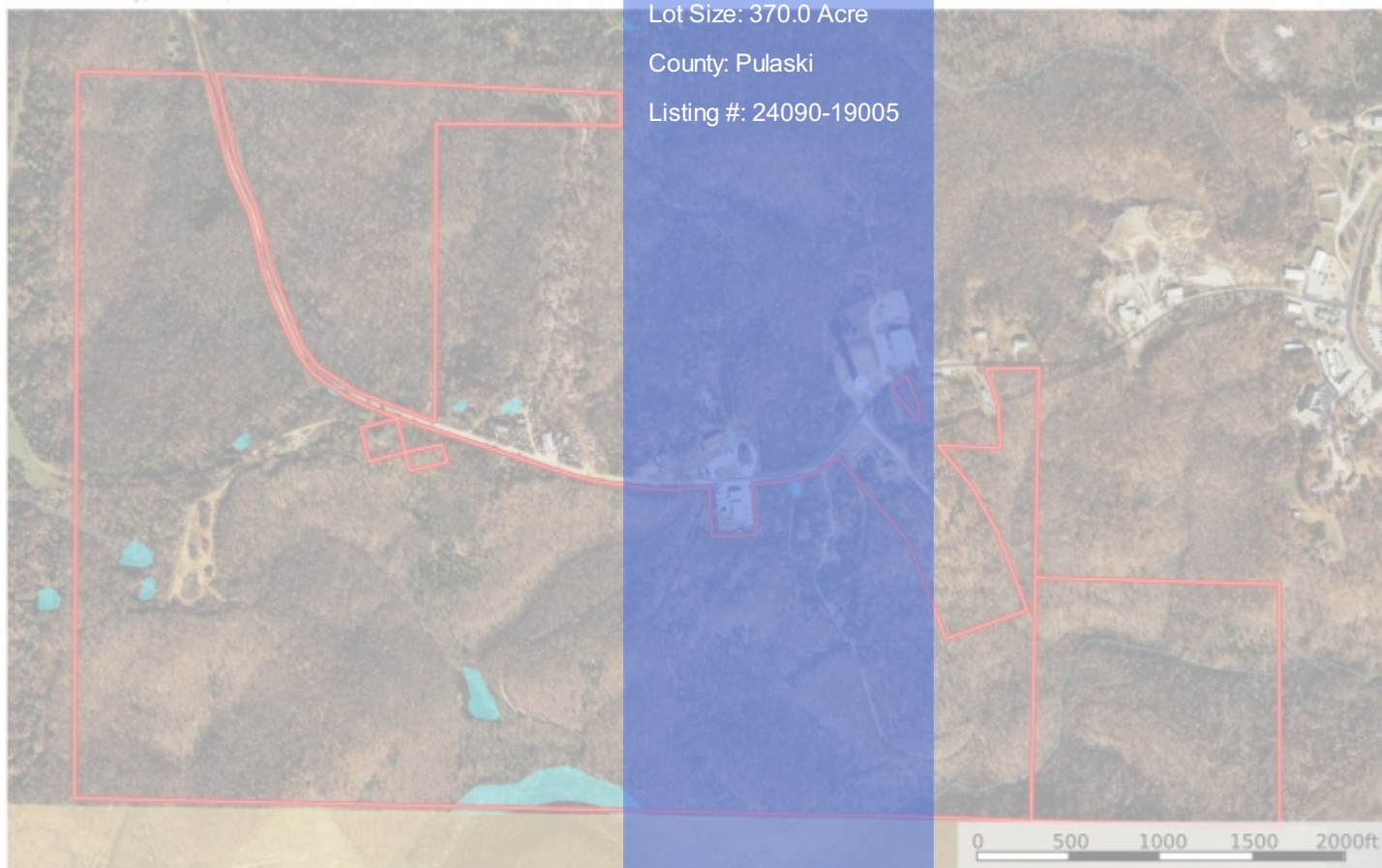


Superior Road 370  
Pulaski County, Missouri, 370 AC +/-

Lot Size: 370.0 Acre

County: Pulaski

Listing #: 24090-19005



 Boundary 100 Year Floodplain 500 Year Floodplain Floodway Special Unmapped/ Not Included Stream, Intermittent River/Creek Water Body

Mike Drury  
UCMissouri.com

 This information contained herein was obtained from sources deemed to be reliable. MapFlight Services makes no warranties or guarantees as to the completeness or accuracy thereof.

## KEY FEATURES

- Pulaski County Hunting Land
  - Paved road access
- Ft Leonard Wood Military Base
  - Prime Hunting & Timber land
- Commercial Development Ground
  - Prime Rock Mining property
- Luxury Residential Development
- St Robert Mo Development Land

Hunting / Commercial Development Property FOR SALE

## Hunting / Commercial Development Property FOR SALE

### OPPORTUNITIES ABOUND !!

- 
- A developer's dream...this property could be your retirement. It hosts a large amount of Upper Gasconade Premium road rock and the ability to install underground storage facilities - both which would be of GREAT benefit to Fort Leonard Wood Military Base, neighboring to the south.
- If you're a golfer, there are plenty of flats among the rolling hills to develop a massive professional course with beautiful views and enough room for a variety of lodging and condo developments.
- Or design your very own Timber Ridge Gated Living Community.
- And for the hunters, 370+/- acres of seclusion with the rolling hills and valley bottoms that provide awesome deer and turkey hunts.
- On top of all that, the price is right!

For more information or to schedule a private showing, call or text

Mike Drury at 1-(417)-839-1119 or e-mail Mike at [mpdduke@gmail.com](mailto:mpdduke@gmail.com).



**Mike Drury**

[mpdduke@gmail.com](mailto:mpdduke@gmail.com)  
[www.ucmissouri.com](http://www.ucmissouri.com)  
(417) 839-1119

1400 W. Elm St. , Lebanon, Missouri 65536